

2011

Summer Edition

# CONNECTIONS



## THIS ISSUE

### LATEST NEWS

Page 1

### WEE SCHOOL

Page 2

### PRESCHOOL

Page 3

### DAYCARE

Page 4

### SSA DEPARTMENT

Page 5

### ENG & ARC CAMP

Page 6

### S&H PRODUCTS

Page 7

### EMPLOYEE RETIREMENT

Page 8



## Latest News

Written By: Laura Zureich, Superintendent

### As We Look to the Future.....

We hear a lot these days about the state budget, about ways to be fiscally efficient, and about public employment. At the Shelby County Board of Developmental Disabilities, I want to let you know where we stand as an organization committed to the provision of quality services for people with developmental disabilities of all ages in our community.

When looking at the state budget, our program and our county overall is hardest hit by the loss of Tangible Personal Property Tax (TPPT). This tax was part of local levy collection and was actually eliminated in 2005 and replaced with the Commercial Activity Tax (CAT). The CAT collects at the state level rather than the local level and is placed in the General Revenue Fund. For a period of time, the state agreed to continue to reimburse what originally were local levy dollars back to local communities. That period of time ends on June 30th of this year. Beginning July 1st, our program will begin to lose those funds, and they will remain in the General Revenue Fund at the state level.

Our program operates through the generous support of local voters in approving three levies; one in 1982 for 1.7 mills, one in 1991 for 1.5 mills, and one in 2002 for 3.2 mills. These levies originally generated a little over 6 million dollars annually to operate our programs and services. *The loss of the CAT will result in a probable loss of approximately 27% of our levy dollars.* Although this loss will gradually occur over a number of years, we have been planning for this day since 2005.

Our planning has included operating this program as efficiently and effectively as possible. We have been able to reduce costs without cutting services or laying off staff. We have done this by reducing our administrative positions and changing our health care coverage. Additionally, we do not have steps in our salary schedules and staff are receiving a 0% salary increase. We also do everything we can to maximize our revenue; bringing as much funding into the program as possible.

When we do need to go back to the voters of Shelby County, we will not ask for additional millage. At most, we will request that our oldest levies (approximately 20 and 30 years old) be replaced to current value. This would mean no increase in millage. As a public service agency providing lifelong services to those with disabilities, the staff and the Board understand the importance of working to sustain our agency long term.

**What you can do: If you are not already a registered voter, please consider registering to vote. We appreciate your support as we continue to work to "Create opportunities for a lifetime".**

Written By, Wee School Team

## The ABCs of Summer Fun!!!

- A**rt time with water paints (easy clean-up!)
- B**low some bubbles
- C**atch some fireflies in the dark
- D**ance in a warm summer rain
- E**scape the rain and read a book together inside
- F**lashlight fun on a warm summer night
- G**ather summer treasure from a walk
- H**ead to a lake or beach area for a summer cool off
- I**ce cream
- J**ump
- K**itchen band (bowls & spoons make wonderful drums!)
- L**ibrary story time
- M**ake mudpies
- N**ame the things you see on a walk
- O**pen a book and read
- P**lan a picnic
- Q**uiet time
- R**un through a sprinkler of water
- S**cribble with sidewalk chalk
- T**hrow a ball high in the air
- U**se a paintbrush dipped in water to “color” the sidewalk
- V**isit a park
- W**alk somewhere new and explore
- e**Xamine a bug in a jar
- Y**ogurt frozen pops—make your own
- Z**oo fun



Update Meetings—May 31st—June 2nd

Summer Session—June 7, 14, 21, 28; July 12, 19, 26; August 2nd



# Summer Camp for Preschoolers

Join us at one or both of the following “CAMP SHELBY” sessions this summer.

## OUTSIDE PLAY

**Up, Up, & Away at Ft. Loramie Elementary School**

**June 13th – June 16th**

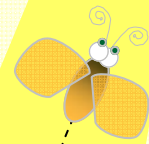
**8:00 AM-10:30 AM**

CRAFTS

**Tents, Trails, & Treats at Shelby Hills Early Childhood Center**

**July 11th – July 14th**

**9:00 AM – 11:30 AM**



SNACKS

- ◆ Staffed by Shelby Hills Team
- Transportation is not provided
- No Flip-Flops
- Limited number of slots, first come first serve bases
- \$50.00 per session

GROUP ACTIVITIES

*If financial assistance is needed, scholarship funds are available.*

*For more information or to register please call (937) 498-4565*

May 26th—Student’s Last Day  
May 27th—Preschool Graduation  
June 13th-16th—Camp Shelby At Ft. Loramie  
July 11th—14th—Camp Shelby At Shelby Hills

August 29th—Open House Fall Session  
September 6th—First Day Fall Session

Written By: Lisa Slonecker, Director

## **Field Trips and Summer Fun**

With summer just around the corner, plans for fun are being made now for the Wilma Valentine Creative Learning Center. The daycare will be venturing off-site for field trips, swim days, picnics in the park, visits to the county fairs, playground time, and more. We have openings for the daycare summer session (age 3-kindergarten). Give us a call at 498-4566 if you are interested!



Fair Food, Fun, Rides, Tractors, Animals!  
WAHOO!



The kids will enjoy visiting the Area Metro Parks and the picnic lunches!



We will visit the Columbus Zoo and get to take our time seeing all the animals!

**Support us by saving used cartridges**



The Wilma Valentine Creative Learning Center is participating in the FundingFactory® Recycling Program! This fundraiser is FREE and simple because there's nothing to sell, no paperwork to fill out and no deadline. The program runs year-round, accumulating constant income for our efforts. But we won't get very far without your support. Please donate your **empty printer cartridges** and **used cell phones** to us and we'll take it from there! We will recycle the cartridges and cell phones through FundingFactory to earn new technology, recreational equipment, and even cash to offset the cost of our field trips and outings.

**If you have any questions about helping us with this great opportunity, please feel free to call Melissa at 498-4566 or e-mail at [mrrittenouse@shelbydd.org](mailto:mrrittenouse@shelbydd.org). Thank you for your support!**

Wednesdays—Cinemark Movie Theatre (8:45-11:30)

Tuesdays—Area Metro Parks (8:45-1:30)

Fridays—Swimming at the Sidney Pool (10:00-12:30)

## Service & Support Administration

Written By: Lisa Schulze

### Day Habilitation Provider Fair To Become an Annual Event

The Shelby County Board of Developmental Disabilities SSA Department (Service and Support Administration), in conjunction with WestCON, hosted a Day Program Provider Fair on Wednesday, March 30th in the Shelby Hills Early Childhood Center Gymnasium.

The Provider Fair resembled a Job Fair, with stations set up around the room and people roaming from table to table picking up pamphlets, watching presentations, looking at displays and asking questions.

Seven individuals attended the fair looking for a new provider. Seven providers were present including S&H Products, NOVA (New Opportunity, Vision and Achievement), Goodwill, AWS, Hand to Hand Agency, Inclusive Solutions, Country Club, and We Can Too.

The aim of the Provider Fair was to connect individuals with Day Hab providers that can help them be successful in community life. Many Day Hab Providers have found the best way to train individuals about job responsibility, attendance, problem solving, social interaction, safety and motor skill development is to actually create a business, produce a product or service, and employ individuals. In this way, employees in training can take part in the entire process from entering an order into the computer to creating the product to shipping the order out.

Some providers, like Hand-to-Hand and NOVA, actually brought individuals they presently serve to the Provider Fair so they could speak of their personal experiences with these agencies and to answer questions individuals seeking work may have, such as, "What type of work do you do? Is transportation provided? What are your hours of work? Are there vacation and sick days and are they paid? Can I split my time with two different work providers?"



Adam Gilbert, SSA Julie Maurer, Eric Marshall, and Derrick Metz of Inclusive Solutions



Diane Ceyler shares a laugh with her Residential Provider Kim Johnson, and Krista Oldiges of S&H Products



Charles Lessing listens as SSA Janel Monnin and Karen Bloomhorst explain opportunities at We Can Too and Capabilities

The event was a huge success with all seven individuals choosing a new provider. To view a list of available State certified day hab and residential providers, please visit our website at: [www.shelbydd.org](http://www.shelbydd.org). Select Service & Support and click on Provider List.

## Camp Opportunities

### SHELBY COUNTY BOARD OF DD ENG DAY CAMP

For kids with disabilities who have completed kindergarten up to age 22 (and still in school)

**Shelby Hills Early Childhood Center from 9:00 a.m.—3:00 p.m.**

**Wednesday Dates:** June 8th, 15th, 22nd, 29th; July 13th, 20th, 27th; August 10th

**Cost:** \$5.00 per day

**Activities, Crafts and Lunch will be provided.**

**Hygiene assistance to be provided, but bring your own supplies**

**These camps are in addition to the August 1 - 5 ARC camp.**



Twenty (20) kids is maximum number per session (depending on the number of participants, a rotating waiting list may need to be established to ensure the most number of kids can participate.)

**For Questions or Enrollment Information:**

**Call (937) 492-9060 and leave a message for Karen Weinschenk  
OR**

**E-mail your questions to [karenwcamp@yahoo.com](mailto:karenwcamp@yahoo.com)**

### SHELBY COUNTY ARC ANNUAL SUMMER RECREATION CAMP

For individuals age six to 22 who live in Shelby County and have a developmental disability

**Sidney Middle School from 9:00 a.m.—2:00 p.m.**

**Dates:** Monday, August 1st through Friday, August 5th



*Campers will enjoy a week of crafts, activities and entertainment.*

**Applications to attend this year's camp will be sent out soon. If you do not receive an application by June 1st, please call the ARC at (937) 658-6717 to request one.**

## S&H Products

Written By: Krista Oldiges, Program Manager

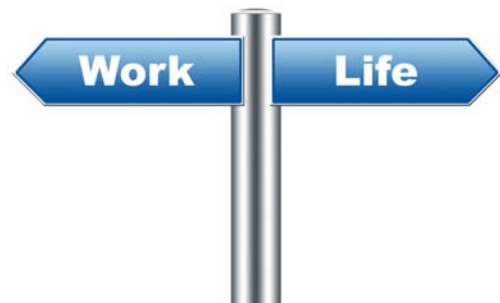
### New Program Being Offered

Bridges to transition is a new program offered through the Shelby County Board of Developmental Disabilities. Bridges serves individuals with developmental disabilities ages 14-22. The purpose of the program is to provide a successful transition from school to work with the appropriate supports in place to achieve employment goals. This opportunity is a partnership between the Ohio Rehabilitation Services Commission (RSC), the Ohio Association of County Boards (OACB), Shelby County Board of Developmental Disabilities, school districts, employers, students and their families.



Alicia Woehrmyer is our Bridges Coordinator; her role is to develop individual plans of employment (IPE) that fit the individuals' needs. She links individuals to the appropriate service for developing the skills needed in the workplace such as job shadowing, coaching, job placement and personal adjustments.

This summer, S&H Products will be hosting a summer career exploration camp, **CAMP EXPLORE**, August 1<sup>st</sup>-5<sup>th</sup> and August 8<sup>th</sup>-12<sup>th</sup> for eligible individuals. The camp will include volunteer experiences, touring a variety of work sites, group skits, mock interviews, opportunities to learn about boundaries and social skills. To enquire about the camp, please contact Krista Oldiges at S&H Products, 492-3596.



July 4th-July 8th—Summer Break

Camp Explore—August 1st-5th; August 8-12th

## SCBDD Staff Member Announces Retirement

Written By: Laura Zureich, Superintendent

Business Director Kristi Marcum plans to retire effective June 17<sup>th</sup> following 30 years of dedicated service to the Shelby County Board of Developmental Disabilities. County Boards operate through a complicated fiscal system resulting from the meshing of federal, state, and local funds; as well as the requirements of many state agencies. A Business Director at a County Board must be accountable to all these agencies and funding sources and Kristi has done this with finesse. Her accuracy, budget development skills, long term financial forecasting, and fiscal analysis have been an integral part of the success of this organization and our stability. I rely on Kristi on a daily basis to analyze data and make projections. She will be missed in more ways than I can count.



Having worked for this Board for the past thirty years, Kristi has seen a tremendous amount of growth and change. At the time of her initial employment, the annual budget for the Shelby County Board of Developmental Disabilities was \$650,000. We had 32 employees and provided services to 75 children and adults with developmental disabilities. Today the annual budget is \$8.2 million. The program employs 130 staff and serves 550 children and adults with developmental disabilities.

Bob Zimmerman, long-term former Superintendent of the program, has this to say regarding Kristi, "Kristi always either knew the answer or knew where to find it. With all of her job responsibilities and resulting stress, she managed to be positive and have a smile on her face every day. Whatever success I have had was due in large part to Kristi's attention to detail and her willingness to do most anything asked of her. Congratulations, Kristi. Enjoy your retirement, you deserve it."

All of us at the Shelby County Board extend this same sentiment to Kristi: Enjoy your retirement. You deserve it!

*Thank you for your dedication to serving people with disabilities in the Shelby County community; we will miss you.*

### Shelby County Board of Developmental Disabilities

1200 S. Children's Home Rd., Sidney, OH 45365

#### ADMINISTRATIVE OFFICES

Laura Zureich, Superintendent  
lzureich@shelbydd.org  
Phone: 937-497-8155

#### SSA DEPARTMENT

Jennie Lukey, Director  
jlukey@shelbydd.org  
Phone: 937-498-4229

#### S&H PRODUCTS

Rick Husa, Director  
rhusa@sandhproducts.com  
Phone: 937-492-3596

#### SHELBY HILLS ECC

Toni Custer, Director  
tcuster@shelbydd.org  
Phone: 937-492-3596

#### WEE SCHOOL

Lisa Slonecker, Director  
lslonecker@shelbydd.org  
Phone: 937-498-0101

#### WVCLC

Lisa Slonecker, Director  
lslonecker@shelbydd.org  
Phone: 937-498-4566

#### TRANSPORTATION

Mary Rodriguez, Manager  
mrodriguez@shelbydd.org  
Phone: 937-498-1848

#### EMERGENCY CELL PHONE:

937-726-2570



For a calendar of events please visit our website at: [WWW.SHELBYDD.ORG](http://WWW.SHELBYDD.ORG)

To receive our newsletter or other correspondence electronically, please e-mail us at:  
[SUGGESTIONS@SHELBYDD.ORG](mailto:SUGGESTIONS@SHELBYDD.ORG)